

Aquilion ONE Fact Sheet

Overview

Over the years, computed tomography systems have played an integral role in the diagnosis and treatment of many diseases and health conditions. Starting with a single-detector row system, CT technology has advanced from 4-, 8-, 16-, 32- and most recently, to a 64-detector row system.

Advances in CT technology have improved patient care and created new ways to diagnose and treat disease.

This decade's most important advancement in CT technology is Toshiba's Aquilion® ONE CT system. The Aquilion ONE CT system revolutionizes CT imaging and represents a culmination of more than ten years of development of dynamic volume CT.

Aquilion ONE provides a uniquely comprehensive exam to reduce the diagnosis time from hours or days to mere minutes for patients experiencing symptoms of heart conditions, stroke and other diseases. Now physicians have access to complete, accurate information to diagnose and treat patients resulting in healthier lives while reducing medical costs.

What is the revolutionary technology behind the Aquilion ONE CT system?

The Toshiba Aquilion ONE CT system will revolutionize CT imaging by imaging an entire organ, in a single rotation or over multiple rotations, showing real-time dynamic movement. Additionally, multi-phase studies, such as perfusion of the brain, heart and other organs, are possible with the Aquilion ONE.

How is the Aquilion ONE different from other CT systems currently on the market?

The Aquilion ONE is the most advanced CT system on the market.

With the Aquilion ONE, it is possible to image an entire organ in a single rotation, for the first time, ensuring greater accuracy and diagnostic confidence. Physicians using the Aquilion ONE can see not only a three-dimensional depiction of an organ, but also how the organ and blood flow are dynamically functioning or moving within and around the organ. No other CT system can do this.

The Aquilion ONE can perform uniquely comprehensive exams, including functional studies, that can reduce overall healthcare costs by replacing the need for multiple tests and invasive procedures, while reducing the amount of contrast material and radiation dose.

What are the clinical benefits of the Aquilion ONE CT system?

The Aquilion ONE will drastically improve patient care by providing comprehensive examinations for the treatment of patients with heart conditions, stroke, cancer and other conditions faster, safer and more accurately, enabling healthier lives and lowering healthcare costs.

What types of scans can the Aquilion ONE CT system perform?

Aquilion ONE can image the entire heart in a single rotation providing volumetric temporal resolution that is superior to multi-detector row temporal resolution available today, resulting in clearer image quality.

Aquilion ONE shows not only whole organ anatomy, but also the changes in the entire organ over time resulting in a better, faster, more complete diagnosis.

In addition, the Aquilion ONE can perform a comprehensive neurological examination providing arterial, venous and whole brain perfusion in a single study with both less contrast and radiation dose.

Beyond traditional CT scans, how else can the Aquilion ONE CT system be used?

The Aquilion ONE's advanced technology allows the system to be used for a variety of examinations. It is fast enough to image the entire heart in less than a heartbeat, opening the door to accurate and safe imaging of patients with arrhythmia.

The Aquilion ONE can perform multiple studies, which may replace studies conducted on several different systems, reducing the number of tests and testing time for patients.

The ability of the system to show organ function in real time is a distinct advantage. For example, a 64-detector row system can show blockage, but the Aquilion ONE can show blockage and how the whole organ and surrounding blood flow are functioning.

How was the Aquilion ONE CT system developed?

The Aquilion ONE was developed over 10 years with multiple prototypes and represents the greatest advancement in CT technology to date. In 2007, Aquilion ONE beta systems were tested at Fujita Health University and the National Cancer Center in Japan and Johns Hopkins University in the U.S.

About Toshiba America Medical Systems

With headquarters in Tustin, Calif., Toshiba America Medical Systems markets, sells, distributes and services diagnostic imaging systems, and coordinates clinical diagnostic imaging research for all modalities in the United States. Toshiba Medical Systems Corp., an independent group company of Toshiba Corp., is a global leading provider of diagnostic medical imaging systems and comprehensive medical solutions, such as CT, Cath & EP Labs, X-ray, Ultrasound, MRI and information systems. Toshiba Corp. is a leader in information and communications systems, electronic components, consumer products, and power systems. Toshiba has approximately 198,000 employees worldwide and annual sales of \$77 billion. For more information, visit www.medical.toshiba.com.

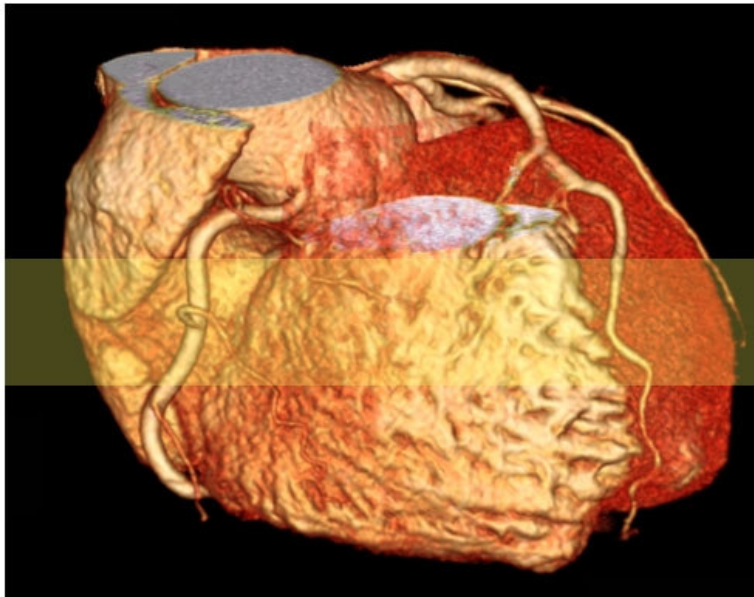
###

Media Contacts:

Charlene Jacobs, Toshiba America Medical Systems, Inc.
O) 714-669-7811
E) cjacobs@tams.com

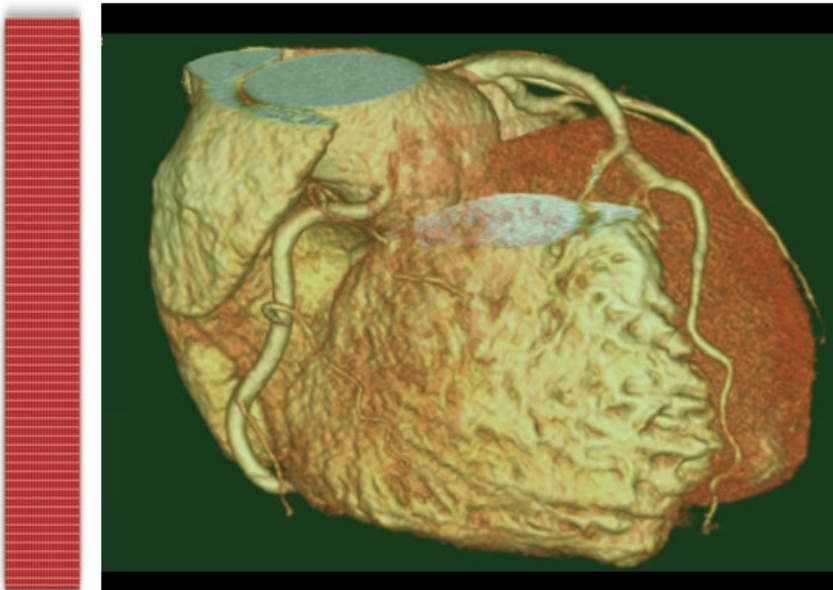
Cathy Wolfe, Toshiba America Medical Systems, Inc.
O) 714-669-4140
E) cwolfe@tams.com

Coverage Comparison



**64-detector
row CT**

A depiction of the coverage acquired with today's 64-detector row CT technology



Aquilion^{ONE}TM

Unlike any other CT system, the Aquilion ONE can scan one organ – including the heart, brain and other organs – in one rotation because it covers up to 16 cm of anatomy using 320 ultra high resolution 0.5mm detector elements.

###