

Halving the food intake  
of laboratory rats

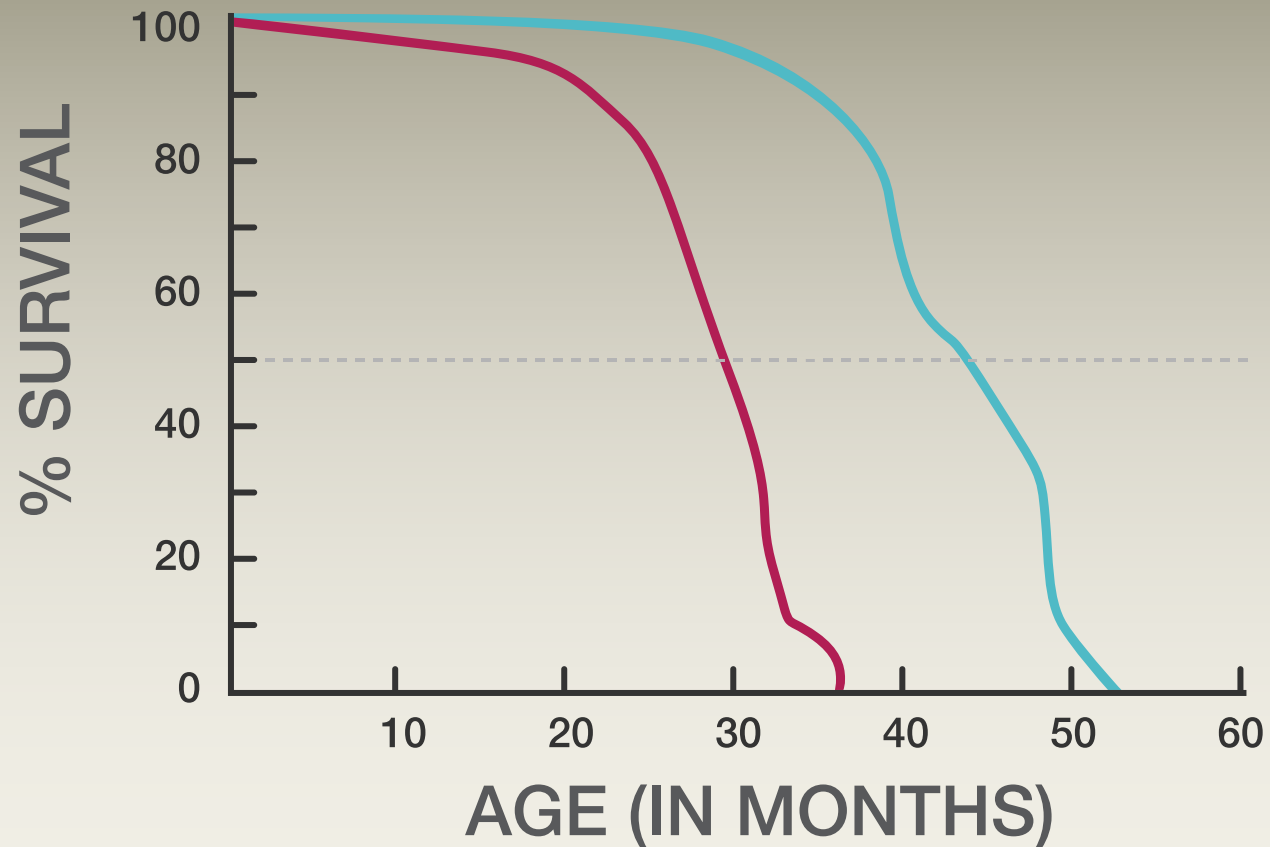
**... doubles their lifespan.**



# Calorie Restriction in Laboratory Rats

 FULLY FED

 50% CALORIE RESTRICTION





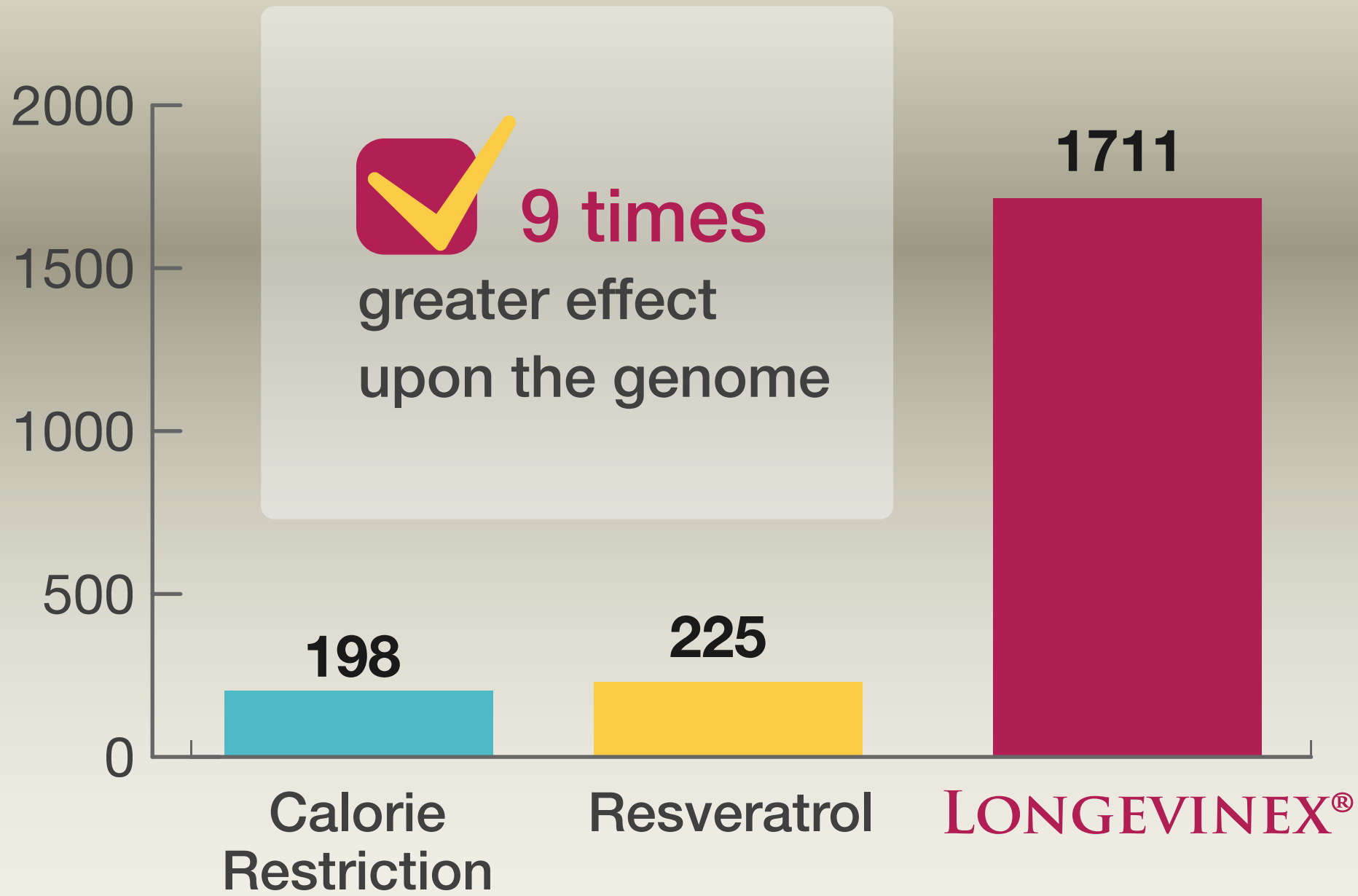
**98%**  
similar genes



## Resveratrol

Could molecularly mimic  
a calorie restricted diet





**9 times**

greater effect  
upon the genome

Calorie  
Restriction

Resveratrol

LONGEVINEX®



# LONGEVINEX®

120 Healthy Years ... The Promise of a New Discovery!

Copyright 2008 Resveratrol Partners LLC